



CATEGORY DEFINITION

Flap wheels are an ideal choice for a wide variety of blending, deburring and finishing applications common in the metal fabrication, welding and polishing industries. Flap wheels are conformable to intricate shapes and contours. Designed to deliver a consistent finish with a uniform rate of cut, flap wheels wear away, continually exposing fresh abrasives.

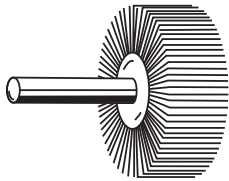
APPLICATIONS:	Used for a wide range of metal fabrication and welding applications including stock removal, blending, deburring, cleaning, finishing, and polishing
SIZE RANGE:	Flap Wheels with mounted steel shanks: 3/8" - 3" diameter Flap Wheels with mounted 1/4-20 thread: 1" - 3" diameter Flap Wheels with arbor holes: 3" - 16" diameter
GRIT RANGE:	40 - 320
ABRASIVE GRAIN:	Ceramic Alumina/Aluminum Oxide, Aluminum Oxide



SHAPE RECOMMENDATION GUIDE

SHAPE

DESCRIPTION/APPLICATION



Flap Wheels with Mounted Steel Shanks

Wheels are designed with a 1/8" or 1/4" steel shank as an integral part of each wheel. These shanks run through the wheel creating better balance, a reduction of chatter, and reduced operator fatigue. They also permit quick changes on air tools when using other abrasive products.



Flap Wheels with Mounted 1/4-20 Thread

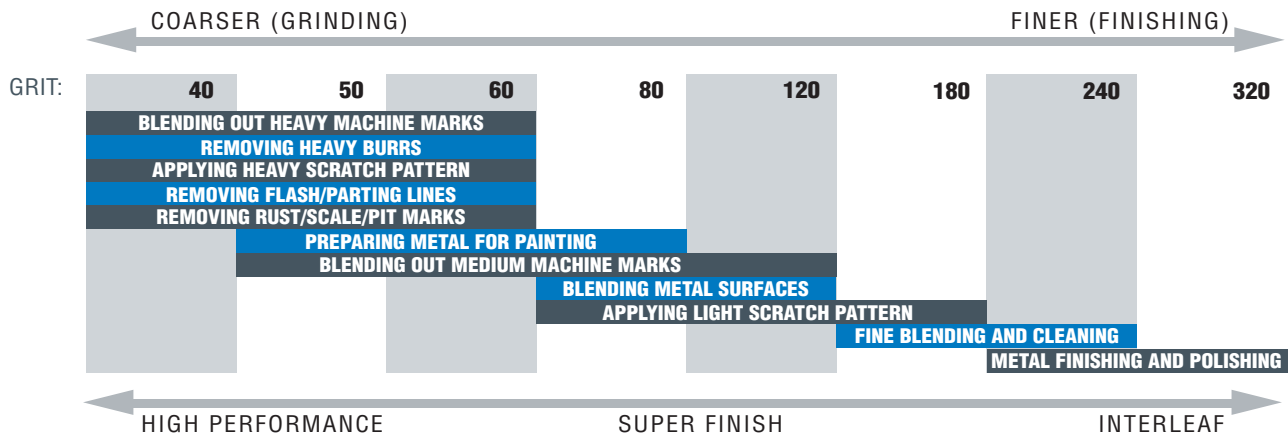
Wheels are designed with a 1/4"-20 thread and flange as an integral part of the wheel. These threads facilitate the quickest changes on air tools using flap wheels exclusively, as there are no special tools needed to change the flap wheel. Also allow extended reach with accessory mandrels.



Flap Wheels with Arbor Holes

For use on larger portable and fixed-base tools where the wheel must fit on an existing arbor.

APPLICATION/GRIT RECOMMENDATION GUIDE



SEE NON-WOVEN FLAP WHEEL SECTION FOR INTERLEAF FLAP WHEELS



FEATURED PRODUCTS



MERIT HIGH PERFORMANCE

BETTER CHOICE FOR MORE DURABLE FLAP WHEEL APPLICATIONS WHERE AGGRESSIVE CUT AND SUPERIOR LIFE ARE REQUIRED

FEATURES

- Long-lasting ceramic alumina/aluminum oxide abrasive grain blend
- Heavy cotton backing

BENEFITS

- Aggressive cut and 2 to 3 times longer life
- Extended durability for added life and reduced edge wear



MERIT SUPER FINISH

BETTER CHOICE WHERE SUPERIOR FINISH IS REQUIRED, OR ON LOW PRESSURE APPLICATIONS

FEATURES

- Long-lasting premium aluminum oxide blend
- Premium flexible cotton backing

BENEFITS

- Excellent cut rate on low-pressure finishing operations
- Softer acting with more flexibility for improved finishing



MERIT METAL

GOOD CHOICE WHEN INITIAL PRICE IS THE MAIN CONSIDERATION

FEATURES

- Quality aluminum oxide abrasive
- Engineered, low-cost cotton backing
- Competitive initial price point

BENEFITS

- Good cut rate and life
- Longer life and wear resistance
- Best starting specification for end-user unable to measure total performance





Micro-Mini Flap Wheels with 1/8" Mounted Steel Shanks

- The smallest flap wheels, ranging from 3/8" to 1-3/16" diameter, mounted on a 1/8" diameter steel shank
- Provide fast polishing and light deburring of internal workpieces with holes or grooves as small as 1/2"

AVAILABILITY

TIER:	GOOD
BRAND:	Merit
TRADENAME:	MICRO-MINI
ABRASIVE:	Aluminum Oxide

TIER:	GOOD
BRAND:	Merit
TRADENAME:	MICRO-MINI
ABRASIVE:	Aluminum Oxide

D X W X SK.	MAX. RPM	GRIT	STD. PKG.	PART NO.
3/8 x 3/8 x 1/8	40,000	60	10	08834137470
		80		08834137471
		120		08834137472
		180		08834137473
		240		08834137474
		320		08834137475
5/8 x 5/8 x 1/8	37,000	60	10	08834137480
		80		08834137481
		120		08834137482
		180		08834137483
		240		08834137484
		320		08834137485
5/8 x 3/4 x 1/8	37,000	80	10	08834137541
		120		08834137542
		180		08834137543
		240		08834137544
		320		08834137545
		3/4 x 3/16 x 1/8		35,000
80	08834137551			
120	08834137552			
180	08834137553			
240	08834137554			
320	08834137555			
3/4 x 3/8 x 1/8	35,000	60	10	08834137560
		80		08834137561
		120		08834137562
		180		08834137563
		240		08834137564
		320		08834137565
3/4 x 1/2 x 1/8	35,000	60	10	08834137570
		80		08834137571
		120		08834137572
		180		08834137573
		240		08834137574
		320		08834137575

D X W X SK.	MAX. RPM	GRIT	STD. PKG.	PART NO.
3/4 x 5/8 x 1/8	35,000	60	10	08834137580
		80		08834137581
		120		08834137582
		180		08834137583
		240		08834137584
		320		08834137585
3/4 x 3/4 x 1/8	35,000	60	10	08834137590
		80		08834137591
		120		08834137592
		180		08834137593
		240		08834137594
		320		08834137595
1-3/16 x 1/8 x 1/8	30,000	80	10	08834137491
		120		08834137492
		180		08834137493
		240		08834137494
		320		08834137495
		1-3/16 x 3/16 x 1/8		30,000
80	08834137501			
120	08834137502			
180	08834137503			
240	08834137504			
320	08834137505			
1-3/16 x 3/8 x 1/8	30,000	80	10	08834137511
		120		08834137512
		180		08834137513
		240		08834137514
		320		08834137515



Flap Wheel Test Kits

Micro-Mini Test Kit "MMC"

- Part No. 08834131493
- Includes five wheels, 3/8" to 1-3/16" diameter in various grits, mounted on a 1/8" diameter hardened steel shank
- The "MMC" kit is ideal for fast polishing and light deburring of internal holes or grooves as small as 1/2"



Shank-Mounted Mini Test Kit "CMM"

- Part No. 08834138004
- Includes ten wheels, 1" to 3" diameter in various grits mounted on a 1/4" diameter hardened steel shank



Mini Flap Wheels with 1/4" Mounted Steel Shanks

AVAILABILITY



TIER:	BETTER	BETTER	GOOD	GOOD
BRAND:	Merit	Merit	Norton	Merit
TRADENAME:	HIGH PERFORMANCE	SUPER FINISH	METALITE R265	METAL
ABRASIVE:	Ceramic Alumina/ALO	Aluminum Oxide	Aluminum Oxide	Aluminum Oxide

D X W X SK.	MAX. RPM	GRIT	STD. PKG.	PART NO.	PART NO.	PART NO.	PART NO.
1 x 1/2 x 1/4	30,000	60 80 120	10				08834149800 08834149801 08834149802
1 x 5/8 x 1/4	30,000	40 60 80 120 180 240 320	10	08834137105 08834137100 08834137101 08834137102 08834131536 08834137104 08834137357	08834130754 08834130755 08834130756 08834130757 08834130758 08834130759	63642502576 63642502577 63642502578	
1 x 1 x 1/4	30,000	40 50 60 80 120 180 240 320	10	08834131259 08834137309 08834137310 08834137311 08834137312 08834137313 08834137114 08834137315	08834130760 08834130761 08834130762 08834130763 08834130764 08834130765	63642502580 63642502581 63642502582 63642502583	08834149803 08834149804 08834149805 08834149806 08834149807 08834149808 08834149809
1-3/16 x 1/4 x 1/4	25,000	60 80 120	10		08834137600 08834137601 08834137602		
1-3/16 x 1/2 x 1/4	25,000	60 80 120	10		08834137810 08834137811 08834137812		
1-3/8 x 5/8 x 1/4	30,000	60 80 120 180 240	10	08834137320 08834137321 08834137322 08834137323 08834137324		63642502584 63642502585	
1-1/2 x 1/2 x 1/4	25,000	60 80 120 180 240	10		08834137130 08834137131 08834137132 08834137133 08834137134		08834149810 08834149811 08834149812
1-1/2 x 1 x 1/4	25,000	40 60 80 120 180 240 320	10	08834135140 08834137340 08834137141 08834137142 08834137343 08834132101 08834137145	08834130766 08834130767 08834130768 08834130769 08834130770 08834130771	63642502592 63642502593 63642502594	08834149816 08834149817 08834149818 08834149819
1-1/2 x 1-1/2 x 1/4	25,000	40 60 80 120 180	10	08834130642 08834130643 08834130644 08834130641 08834130695			
2 x 1/2 x 1/4	25,000	40 60 80 120 180 240 320	10		08834137350 08834137151 08834137152 08834137353 08834137354 08834137355	63642502596 63642502597	08834149820 08834149821 08834149822 08834149823

CONTINUED



Mini Flap Wheels with 1/4" Mounted Steel Shanks CONTINUED

AVAILABILITY



TIER:

BRAND:

TRADENAME:

ABRASIVE:

BETTER	BETTER	GOOD	GOOD
Merit	Merit	Norton	Merit
HIGH PERFORMANCE	SUPER FINISH	METALITE R265	METAL
Ceramic Alumina/ALO	Aluminum Oxide	Aluminum Oxide	Aluminum Oxide

D X W X SK.	MAX. RPM	GRIT	STD. PKG.	PART NO.	PART NO.	PART NO.	PART NO.	
2 x 3/4 x 1/4	25,000	40	10	08834137158	08834130772			
		60		08834137160				08834130773
		80		08834137161				08834130774
		120		08834137162				08834130775
		180		08834137163				
2 x 1 x 1/4	25,000	40	10	08834137377	08834130778	63642502600	08834149824	
		50		08834137169			08834149825	
		60		08834137370			08834149826	
		80		08834137371			08834149827	
		120		08834137372			08834149828	
		180		08834137373				
		240		08834137374				
320	08834137375							
2 x 1-1/2 x 1/4	25,000	40	10	08834137183	08834130784			
		60		08834137380				08834130785
		80		08834137381				08834130786
		120		08834137382				
		240		08834137384				
320	08834137319							
2-1/2 x 1/2 x 1/4	20,000	60	10			63642502604		
		80		63642502605				
		120		63642502606				
2-1/2 x 1 x 1/4	20,000	40	10	08834137408	08834130790	63642502608		
		60		08834137410				08834130791
		80		08834137411				08834130792
		120		08834137412				08834130793
		180		08834137413				08834130794
		240		08834137633				08834130795
320	08834137415							
2-1/2 x 1-1/2 x 1/4	20,000	60	10	08834137420				
		80		08834137421				
		120		08834137422				
3 x 1/2 x 1/4	20,000	40	10		08834137230	63642502612	08834149833	
		60		08834137231			08834149834	
		80		08834137232			08834149835	
		120		08834137433				
		180		08834137235				
		240		08834137287				
320								
3 x 3/4 x 1/4	20,000	60	10	08834137440	08834130796			
		80		08834137441				08834130797
		120		08834130798				
3 x 1 x 1/4	20,000	40	10	08834137456	08834130802	63642502620	08834149836	
		60		08834137450			08834149837	
		80		08834137451			08834149838	
		120		08834137252			08834149839	
		180		08834137253			08834149840	
		240		08834135339				
		320		08834135341				
3 x 2 x 1/4	12,000	40	10	08834137460				
		60		08834137260				
		80		08834137261				
		120		08834137262				
		180		08834137263				



Mini Flap Wheels with 1/4"-20 Thread

AVAILABILITY



TIER:

BETTER

BETTER

GOOD

BRAND:

Merit

Merit

Norton

TRADENAME:

HIGH PERFORMANCE

SUPER FINISH

METALITE R265

ABRASIVE:

Ceramic Alumina/Aluminum Oxide

Aluminum Oxide

Aluminum Oxide

D X W X THD.	MAX. RPM	GRIT	STD. PKG.	PART NO.	PART NO.	PART NO.		
1 x 5/8 x 1/4-20	30,000	60	10	08834131001	08834130700	63642502624		
		80		08834131002			08834130701	63642502625
		120		08834131003			08834130702	63642502626
		180					08834130703	
1 x 1 x 1/4-20	30,000	40	10	08834131027	08834130706	63642502628		
		60		08834131008			08834130707	63642502629
		80		08834131009			08834130708	63642502630
		120		08834131010			08834130709	63642502631
		180		08834131011			08834130710	
		240		08834131012			08834130711	
1-3/8 x 5/8 x 1/4-20	30,000	60	10	08834132001	08834130834	63642502632		
		80		08834132002			63642502633	
		120		08834132003			63642502634	
1-5/8 x 1/2 x 1/4-20	25,000	60	10		08834132008			
		80		08834132009				
		120		08834132010				
		180		08834132011				
1-5/8 x 1 x 1/4-20	25,000	40	10	08834132051	08834130712	63642502638		
		60		08834132015			08834130713	63642502639
		80		08834132016			08834130714	63642502640
		120		08834132017			08834130715	
		180		08834132018				
		320		08834132020				
2 x 1/2 x 1/4-20	25,000	60	10		08834133001	63642502642		
		80		08834133002			63642502643	
		120		08834133003			63642502644	
		180		08834133004				
		320		08834133006				
2 x 3/4 x 1/4-20	25,000	60	10	08834133008	08834130718			
		80		08834133009			08834130719	
		120		08834133010			08834130720	
		180		08834133011				
2 x 1 x 1/4-20	25,000	40	10	08834133044	08834130724	63642502646		
		60		08834133015			08834130725	63642502647
		80		08834133016			08834130726	63642502648
		120		08834133017			08834130727	63642502649
		180		08834133018			08834130728	
		240		08834133019			08834130729	
2 x 1-1/2 x 1/4-20	25,000	60	10	08834135201	08834130730			
		80		08834135202			08834130731	
		120		08834135203			08834130732	
		180		08834135204				
2-1/2 x 1/4 x 1/4-20	20,000	60	10		08834134001			
		80		08834134002				
		120		08834134003				
		180		08834134004				
2-1/2 x 3/8 x 1/4-20	20,000	60	10		08834134008			
		80		08834134009				
		120		08834134010				
2-1/2 x 1/2 x 1/4-20	20,000	60	10		08834134015	63642502650		
		80		08834134016			63642502651	
		120		08834134017				
		180		08834134018				
2-1/2 x 1 x 1/4-20	20,000	40	10	08834134061	08834130736	63642502654		
		60		08834134022			08834130737	63642502655
		80		08834134023			08834130738	63642502656
		120		08834134024				
		180		08834134025				

FOR ADAPTERS FOR FLAP WHEELS WITH 1/4"-20 THREAD, SEE THE END OF THIS SECTION



Mini Flap Wheels with 1/4"-20 Thread CONTINUED

AVAILABILITY

D X W X THD.	MAX. RPM	GRIT	STD. PKG.	TIER: BETTER		
				BRAND: Merit		
TRADENAME: HIGH PERFORMANCE				BRAND: Merit		
ABRASIVE: Ceramic Alumina/Aluminum Oxide				ABRASIVE: Aluminum Oxide		
				TIER: GOOD		
				BRAND: Norton		
				TRADENAME: METALITE R265		
				ABRASIVE: Aluminum Oxide		
				PART NO.		
3 x 1/2 x 1/4-20	20,000	60	10			
		80				
		120				
		180				
3 x 3/4 x 1/4-20	20,000	60	10	08834135008	08834135001	
		80		08834135009	08834135002	
		120		08834135010	08834135003	63642502659
3 x 1 x 1/4-20	20,000	40	10	08834135230	08834130748	63642502664
		60		08834135015	08834130749	63642502665
		80		08834135016	08834130750	63642502666
		120		08834135017	08834130751	
		180		08834135018	08834130752	
		240		08834135019	08834130753	
		320				

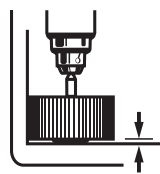
FOR ADAPTERS FOR FLAP WHEELS WITH 1/4-20 THREAD, SEE THE END OF THIS SECTION



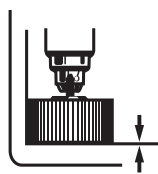
Cup-Type Mini Flap Wheels with 1/4" Mounted Steel Shanks

- Primarily used for bottom or side-wall type sanding where conventional tools do not reach
- Cup-type mini flap wheels will not mar your workpiece while reaching flush into areas where other wheels cannot

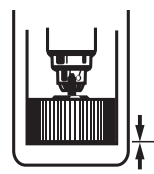
D X W X SK.	MAX. RPM	GRIT	STD. PKG.	TIER: GOOD	
				BRAND: Merit	
ABRASIVE: Aluminum Oxide					
PART NO.					
2-1/2 x 1-1/2 x 1/4	20,000	60	10	08834144463	



TYPICAL WHEELS



CUP WHEELS GET FLUSH INTO CORNERS AND THE BOTTOMS OF CYLINDERS



Flap Wheel Test Kits

Mini 1/4"-20 Thread Test Kit "CQ"

- Part No. 08834138001
- Includes ten, 1" to 3" diameter, 1/4"-20 thread mini flap wheels
- Each kit includes a 1/4"-20 QC-4 quick-change adapter



3-1/2" – 8" Flap Wheels with Arbor Holes

AVAILABILITY



TIER:

BRAND:

TRADENAME:

ABRASIVE:

BETTER

GOOD

Merit

Norton

HIGH PERFORMANCE

METALITE R265

Ceramic Alumina/Aluminum Oxide

Aluminum Oxide

<i>D X W X H</i>	<i>MAX. RPM</i>	<i>GRIT</i>	<i>STD. PKG.</i>	<i>PART NO.</i>	<i>PART NO.</i>
3-1/2 x 1 x 5/8	12,000	40	10	08834122001	63642502668 63642502669
		50		08834122002	
		60		08834122003	
		80		08834122004	
		120		08834122006	
		180		08834122007	
		240		08834122008	
		320		08834122009	
		3-1/2 x 1-1/2 x 5/8		12,000	
50	08834122012				
60	08834122013				
80	08834122014				
120	08834122016				
150	08834122017				
180	08834122018				
240	08834122019				
320	08834122020				
3-1/2 x 2 x 5/8	12,000	40	10	08834122022	
		60		08834122024	
		80		08834122025	
		120		08834122027	
		180		08834122028	
4' x 1 x 5/8	12,000	40	10	08834122032	63642502673 63642502674 63642502675
		50		08834122033	
		60		08834122034	
		80		08834122035	
		120		08834122037	
		180		08834122038	
		240		08834122039	
		320		08834122040	
4 x 1-1/2 x 5/8	12,000	40	10	08834122042	
		50		08834122043	
		60		08834122044	
		80		08834122045	
		120		08834122047	
		240		08834122050	
4 x 2 x 5/8	12,000	40	10	08834122053	63642502677
		50		08834122054	
		60		08834122055	
		80		08834122056	
		120		08834122058	
		180		08834122059	
		240		08834122060	
		320		08834122061	
5 x 1 x 5/8	6,200	80	5		63642502678
5 x 1-1/2 x 5/8	12,000	40	10	08834122063	
		50		08834122064	
		60		08834122065	
		80		08834122066	
		120		08834122068	
		180		08834122070	
		240		08834122071	
		320		08834122072	
6 x 1/2 x 1	6,000	40	10	08834123001	
		60		08834123003	
		80		08834123004	
		120		08834123005	
		150		08834122198	
		180		08834123006	
		240		08834123007	
		320		08834122137	

FOR FLAP WHEEL WITH ARBOR HOLE ADAPTERS AND BUSHINGS, SEE THE END OF THIS SECTION

CONTINUED



3-1/2" – 8" Flap Wheels with Arbor Holes CONTINUED

AVAILABILITY



TIER:

BRAND:

TRADENAME:

ABRASIVE:

BETTER

BETTER

GOOD

GOOD

Merit

Merit

Norton

Merit

HIGH PERFORMANCE

SUPER FINISH

METALITE R265

METAL

Ceramic Alumina/ALO

Aluminum Oxide

Aluminum Oxide

Aluminum Oxide

<i>D X W X H</i>	<i>MAX. RPM</i>	<i>GRIT</i>	<i>STD. PKG.</i>	<i>PART NO.</i>	<i>PART NO.</i>	<i>PART NO.</i>	<i>PART NO.</i>				
6 x 1 x 1	6,000	40	5	08834123009		63642502679	08834120167				
				08834123010			08834120168				
				08834123011	08834121002	63642502680	08834120169				
				08834123012	08834121003	63642502681	08834120170				
							08834120171				
				08834123014	08834121005	63642502682	08834120172				
				08834123015	08834121006						
				08834123016	08834121007		08834120174				
				08834123017	08834121008		08834120176				
				08834123018	08834121009		08834120177				
				6 x 1-1/2 x 1	6,000	40	5	08834123020			
08834123021											
08834123022	08834121023	63642502686									
08834123023	08834121024	63642502687									
08834123025	08834121025										
08834123026	08834121106										
08834123027	08834121026										
08834123028	08834121027										
08834123029	08834121109										
6 x 2 x 1	6,000	40	5					08834123031		63642502689	08834120189
								08834123032			08834120190
				08834123033	08834121030	63642502691	08834120191				
				08834123034	08834121031	63642502692	08834120192				
							08834120198				
				08834123036	08834121032	63642502694	08834120194				
				08834123038	08834121033		08834120197				
				08834123039	08834121034		08834120199				
				08834123040	08834121035		08834120493				
				6 x 3 x 1	6,000	40	3	08834123053			
08834123054											
08834123055		63642502696									
08834123056											
08834123058											
08834122544											
08834123060											
08834123061											
08834122329											
8 x 1 x 1	4,500	40	3					08834123070			
								08834123071			
				08834123072		63642502698					
				08834123073							
				08834123075							
				08834123077							
				08834123078							
				08834123079							
				8 x 2 x 1	4,500	40	3	08834123092			
								08834123093			
								08834123094		63642502700	
08834123095		63642502701									
08834123097											
08834123099											
08834123100											
08834123101											

FOR FLAP WHEEL WITH ARBOR HOLE ADAPTERS AND BUSHINGS, SEE THE END OF THIS SECTION



10" – 16" Large Flap Wheels with Arbor Holes

Wide range of applications:

- For polishing/grinding jobs in production work as well as clean-up and maintenance jobs
- Work on metals, plastic, rubber and wood

Easy to operate:

- No adjustments, dressing, or preparation required before or during operation

Fewer rejected parts:

- More forgiving than other abrasive products
- Reduce the possibility of flattening, gouging and surface deformation

AVAILABILITY

					TIER:	BETTER
					BRAND:	Merit
					TRADENAME:	HIGH PERFORMANCE
					ABRASIVE:	Ceramic Alumina/ALO
D X W X H	MAX. RPM	GRIT	STD. PKG.	PART NO.		
10 x 1 x 1-3/4	4,000	40	4	08834122223		
		60		08834124002		
		80		08834124003		
		120		08834124005		
		150		08834124006		
		180		08834124007		
		240		08834122889		
10 x 1-1/2 x 1-3/4	4,000	60	4	08834124022		
		80		08834124023		
		120		08834124025		
		180		08834124027		
10 x 2 x 1-3/4	4,000	60	2	08834124042		
		80		08834124043		
		120		08834124045		
		180		08834124047		
10 x 3 x 1-3/4	4,000	60	2	08834124077		
		80		08834122316		
		120		08834122131		
		180		08834122132		
12 x 1 x 1-3/4	3,000	60	4	08834124085		
		80		08834122349		
		120		08834122311		
		180		08834122315		
12 x 2 x 1-3/4	3,000	40	2	08834122248		
		50		08834122249		
		60		08834122250		
		80		08834122267		
		120		08834122269		
		150		08834122270		
		180		08834122271		
		240		08834122273		
320	08834122275					
12 x 4 x 1-3/4	2,400	50	1	08834120013		
		60		08834120014		
		80		08834120015		
		120		08834120016		
		180		08834120017		
		240		08834120019		
14 x 1 x 1-3/4	2,400	60	1	08834120020		
		80		08834120021		
		120		08834120022		
		180		08834120023		
14 x 1-1/2 x 1-3/4	2,400	60	1	08834120024		
		80		08834120025		
		120		08834120026		
		180		08834120027		
14 x 2 x 1-3/4	2,400	60	1	08834120028		
		80		08834123215		
		120		08834122907		
		240		08834120032		

AVAILABILITY

					TIER:	BETTER
					BRAND:	Merit
					TRADENAME:	HIGH PERFORMANCE
					ABRASIVE:	Ceramic Alumina/ALO
D X W X H	MAX. RPM	GRIT	STD. PKG.	PART NO.		
14 x 3 x 1-3/4	2,400	60	1	08834120033		
		80		08834120034		
		120		08834120035		
		240		08834120036		
14 x 4 x 1-3/4	2,000	60	1	08834120037		
		80		08834122829		
		120		08834122502		
		180		08834120040		
240	08834120041					
16 x 1 x 1-3/4	2,400	60	1	08834120042		
		80		08834120043		
		120		08834120044		
		180		08834120045		
240	08834120046					
16 x 2 x 1-3/4	2,400	60	1	08834120047		
		80		08834120049		
		120		08834120050		
		180		08834120051		
240	08834120052					
16 x 3 x 1-3/4	2,400	60	1	08834120053		
		80		08834120054		
		120		08834120055		
		180		08834120056		
240	08834120057					
16 x 4 x 1-3/4	2,000	60	1	08834120058		
		80		08834120059		
		120		08834120060		
		180		08834120061		
240	08834122435					
16 x 5 x 1-3/4	2,000	60	1	08834120063		
		80		08834120064		
		180		08834120065		
		240		08834120066		
16 x 6 x 1-3/4	2,000	60	1	08834120067		
		80		08834120068		
		120		08834120069		
		180		08834120070		
240	08834120071					
16 x 8 x 1-3/4	1,800	60	1	08834120072		
		80		08834120073		
		120		08834120074		
		180		08834120075		
240	08834120076					
16 x 10 x 1-3/4	1,800	60	1	08834120077		
		80		08834120078		
		120		08834120079		
		180		08834120080		
240	08834120081					

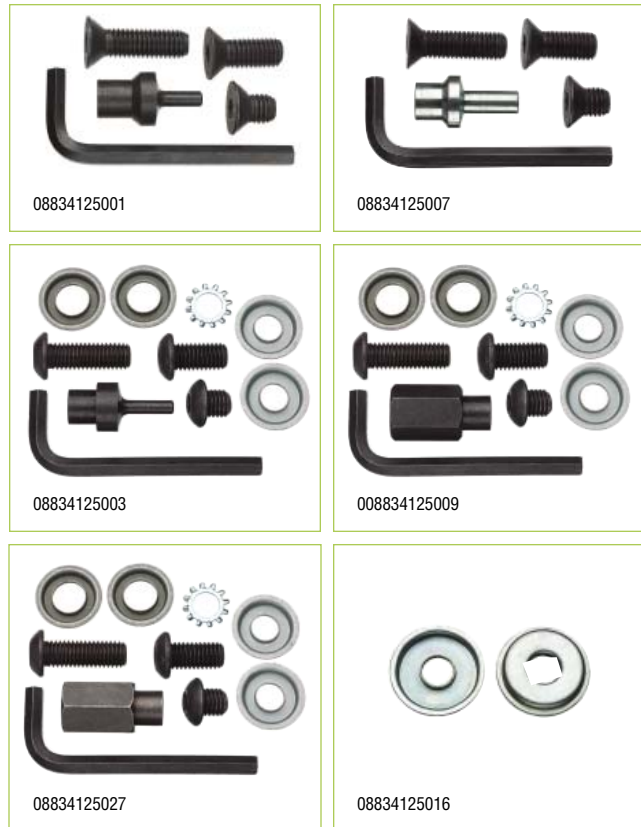
FOR FLAP WHEEL WITH ARBOR HOLE ADAPTERS AND BUSHINGS, SEE THE END OF THIS SECTION



Adapter and Bushings for Flap Wheels with Arbor Holes

WHEEL DIAMETER	ADAPTERS	PART NO.
SHANK ADAPTERS		
3-1/2	1/4 Shank	08834125001
3-1/2	3/8 Shank	08834125007
4 - 8	1/4 Shank	08834125003
THREADED MOUNTING ADAPTERS		
4 - 8	3/8-24 Thread	08834125009
4 - 8	5/8-11 Thread	08834125027
REDUCING BUSHINGS		
6 - 8	1 to 3/8	08834125016
	1 to 1/2	08834125017
	1 to 5/8	08834125018
	1 to 3/4	08834125019
	1 to 7/8	08834125020

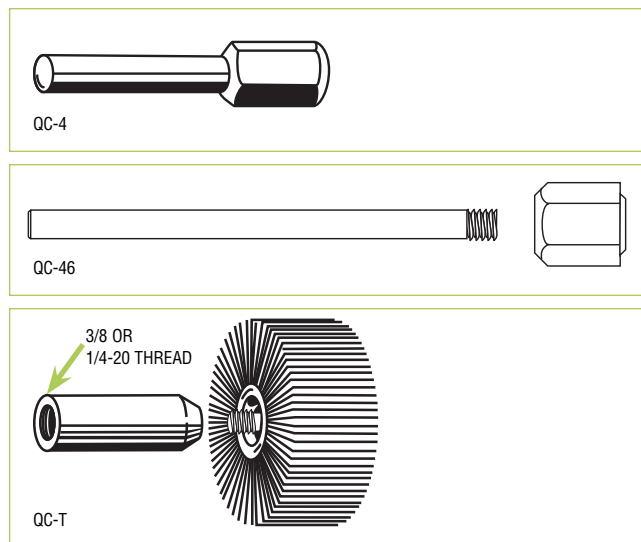
STANDARD PACKAGES = 1 ADAPTER, 1 PAIR OF BUSHINGS



Adapters for 1/4"-20 Thread Mini and Arbor Hole Flap Wheels

MODEL	DESCRIPTION	PART NO.
ADAPTERS		
ADAPT C	Fits 3 x 2 x 3/8 arbor flap wheel	08834137009
MA-100	Fits A.H. Mini Wheel	08834137007
QC-8	1/8 x 5/8	08834137002
QC-4	1/4 SK. Dia. x 5/8 SK. L.	08834137001
QC-44	1/4 x 4	08834137003
QC-46	1/4 x 6	08834137004
QC-48	1/4 x 8	08834137005
QC-T	1/4-20 Thread	08834137012
QC-T	3/8-24 Thread	08834137010

STANDARD PACKAGE = 1 ADAPTER
OTHER THREAD SIZES AVAILABLE FOR QUOTATION





Sand-O-Flex Wheels

With their firm cushioning brushes, Sand-O-Flex's abrasive strips are forced into, around and over corners, hollow and fluted surfaces, and small openings. Pressure is distributed evenly over the surface to prevent loss of detail and the flattening of rounded areas; for sanding metals, woods, plastics, rubber and ceramic.

Sand-O-Flex wheels are designed to fit most standard equipment. They load quickly and easily by turning the index knob as needed, allowing you to change grit size in minutes. Sand-O-Flex refills are available both scored (for finer, less aggressive work) and unscored. And, with the use of Merit adapters, Sand-O-Flex wheels will fit most electric bench grinders.



Sand-O-Flex Wheels – Model 350-RP

- Diameter: 6-1/2" overall, 4" diameter high-impact plastic body
- 1" wide abrasive strips backed by 8 cushioning brushes
- 1/4" diameter steel shank
- Weight: 9-1/2 oz.
- Maximum operating speed: 2,400 RPM
- Special adapter required for bench grinder use
- Some assembly required



AVAILABILITY

TIER:	GOOD
BRAND:	Merit
TRADENAME:	SAND-O-FLEX
ABRASIVE:	Aluminum Oxide

MODEL NO.	GRIT	PART NO.
SAND-O-FLEX WHEEL		
350-RP		08834111051
COMES ASSEMBLED WITH 80 GRIT A/O RESIN BOND SCORED REFILL AND BRUSHES		
SAND-O-FLEX ACCESSORIES		
Bench Grinder Adapter 350-RP		08834111055
1/4 Shank to 1/2 Shank		
Replacement Brushes for 350-RP; 8 per set		08834113003
RESIN BOND REFILLS		
350-RP SCORED	60	08834111052
10/box	80	08834111053
	100	08834112114
	120	08834111054
	180	08834111057
350-RP UNSCORED	60	08834112031
10/box	80	08834111059
	100	08834112021
	120	08834112032
	180	08834112033
GLUE BOND REFILLS		
350-RP SCORED	60	08834112053
10/box	80	08834112054
	100	08834112055
	120	08834112056
	150	08834112057
	180	08834112058
	240	08834112059
	320	08834112060
350-RP UNSCORED	60	08834112043
10/box	80	08834112044
	100	08834112045
	120	08834112046
	150	08834112047
	180	08834112048
	240	08834112049
	320	08834112050